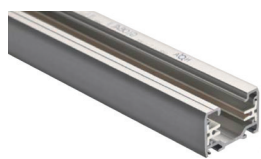


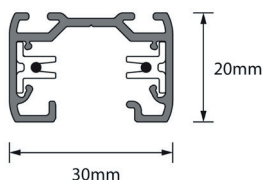
TRK SYSTEM



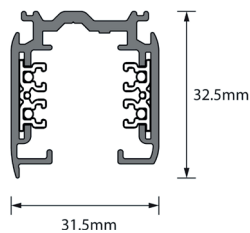
Single circuit track (/1CT)



Three circuit track (/3CT)



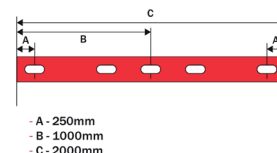
Single circuit track cross section dimensions (/1CT)



Three circuit track DALI cross section dimensions (/3CT)

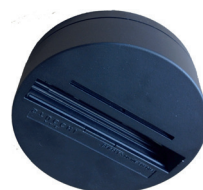


Track maximum loadings for single and three circuit

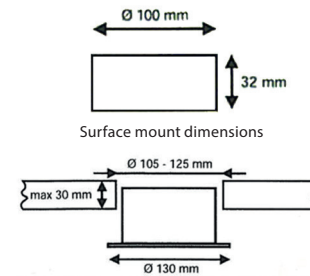


A - 250mm
B - 1000mm
C - 2000mm

Track fixing centres for both single and three circuit



Surface mounting adapter (/SMA)



Recess mount Dimensions

- Installation: Track system is suitable for use with our TRK range and global trac compatible spotlights.
- Available as either single or three circuit track (/1CT/3CT). Three circuit track is suitable for DALI dimming.
- One and two metre lengths can be specified with either a satin silver or a white finish (/SS/WH).
- The TRK system can be constructed to suit a diverse range of applications using optional accessories. Straight connector (/SC), L shape connector (/LC) and T connector (/TC). Please contact technical for further details.
- Available with End Cap (/TRK-EC), Feed (/TRK-F), Connector (/TRK-SC), Live Feed (/TRK-EF), L Feed (/TRK-LF) and L Feed (/TRK-MF).
- For the above components please specify (/1CT) for single or (/3CT) for three circuit for the correct system.
- Refer to page 173 for EMLLED TRK emergency fitting.

Product	MI/TRK-S LED TRK System		
Light Source	LED		
Circuit	/1CT Single Circuit Track	/3CT Three Circuit Track	
Size	/1M 1 Metre	/2M 2 Metre	
Driver	/1CT (STD) Non Dimming	/3CT (DALI) DALI Dimming	
Colour	/WH White	/SS Satin Silver	
Connectors	/SC Straight connector	/LC L Shape Connector	/TC T Connector
Additional connectors	Please see details in the text box above.		
To Specify: TRK System, Three circuit track (DALI), two metres, satin silver. Part code: MI/TRK-S/3CT/2M/SS Track lengths can be site cut, this must be done using appropriate tools and fully in accordance with installation instructions, copies available on request. It is the installing contractors responsibility to ensure a fully compliant and safe installation.			

